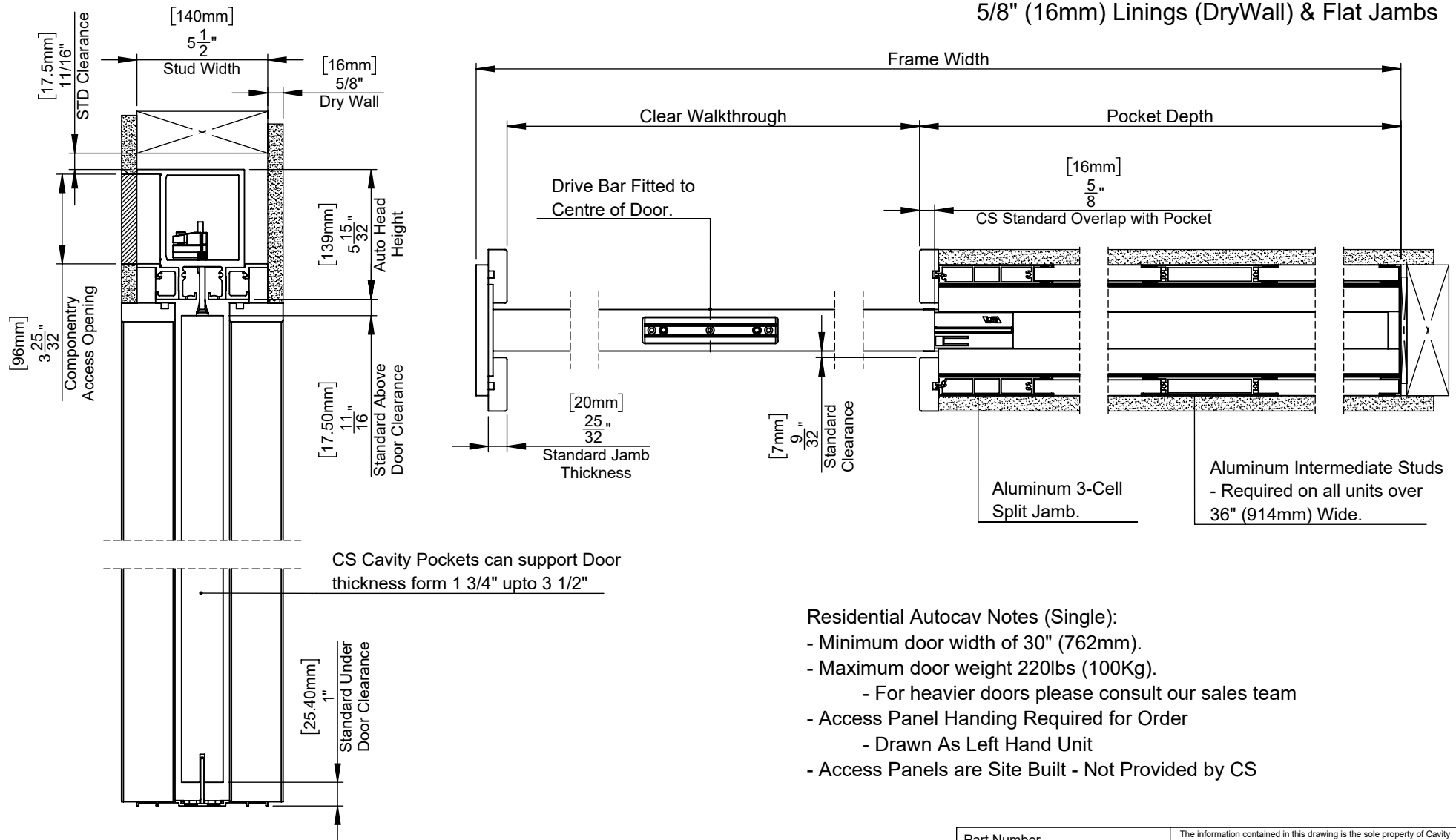


# CS AutoCav 5 1/2 Residential

Single Cavity Slider Pocket Frame to Suit:  
5/8" (16mm) Linings (DryWall) & Flat Jamb



Floor clearance adjustable to give 7/8" - 1 3/16" (22 - 30mm) gap. If less gap required a taller door or smaller cavity slider pocket frame must be specified

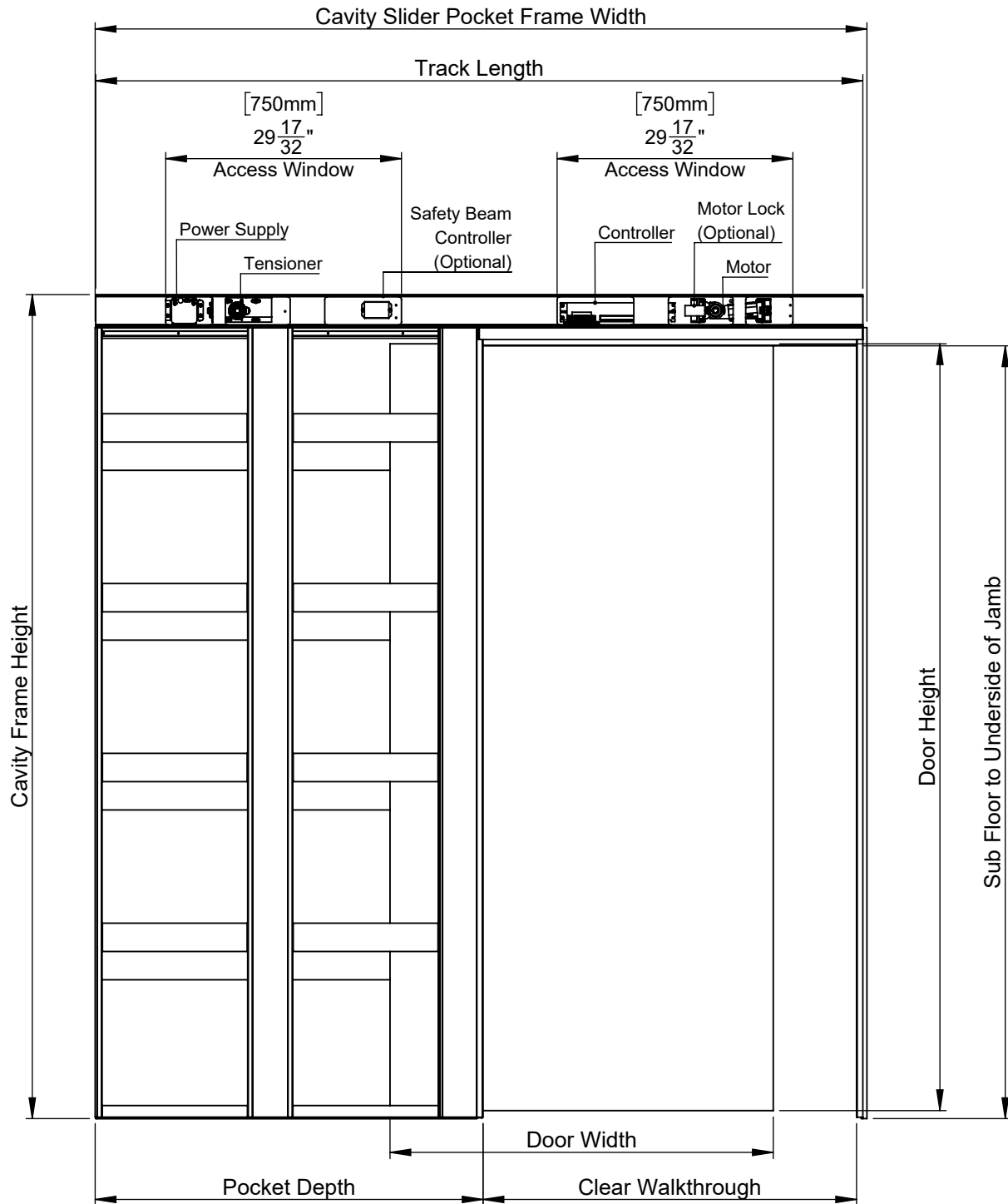
### Residential Autocav Notes (Single):


- Minimum door width of 30" (762mm).
- Maximum door weight 220lbs (100Kg).
  - For heavier doors please consult our sales team
- Access Panel Handling Required for Order
  - Drawn As Left Hand Unit
- Access Panels are Site Built - Not Provided by CS

Part Number		The information contained in this drawing is the sole property of Cavity Sliders USA Inc. Any reproduction, disclosure or use of this document, without the written permission of Cavity Sliders USA Inc, is strictly prohibited.	
Units		 Quality Sliding Door Hardware	
Measurements in mm & Inches			
Scale	Sheet	548 Finney Ct, Gardena, CA 90248 Phone +1 (888) 466 0030 Fax +1 (310) 769 5824 www.cavitysliders.com	
Not to Scale	1 of 3		
Date	Rev.		
7/12/2020	-01		

# CS AutoCav 5 1/2 Residential

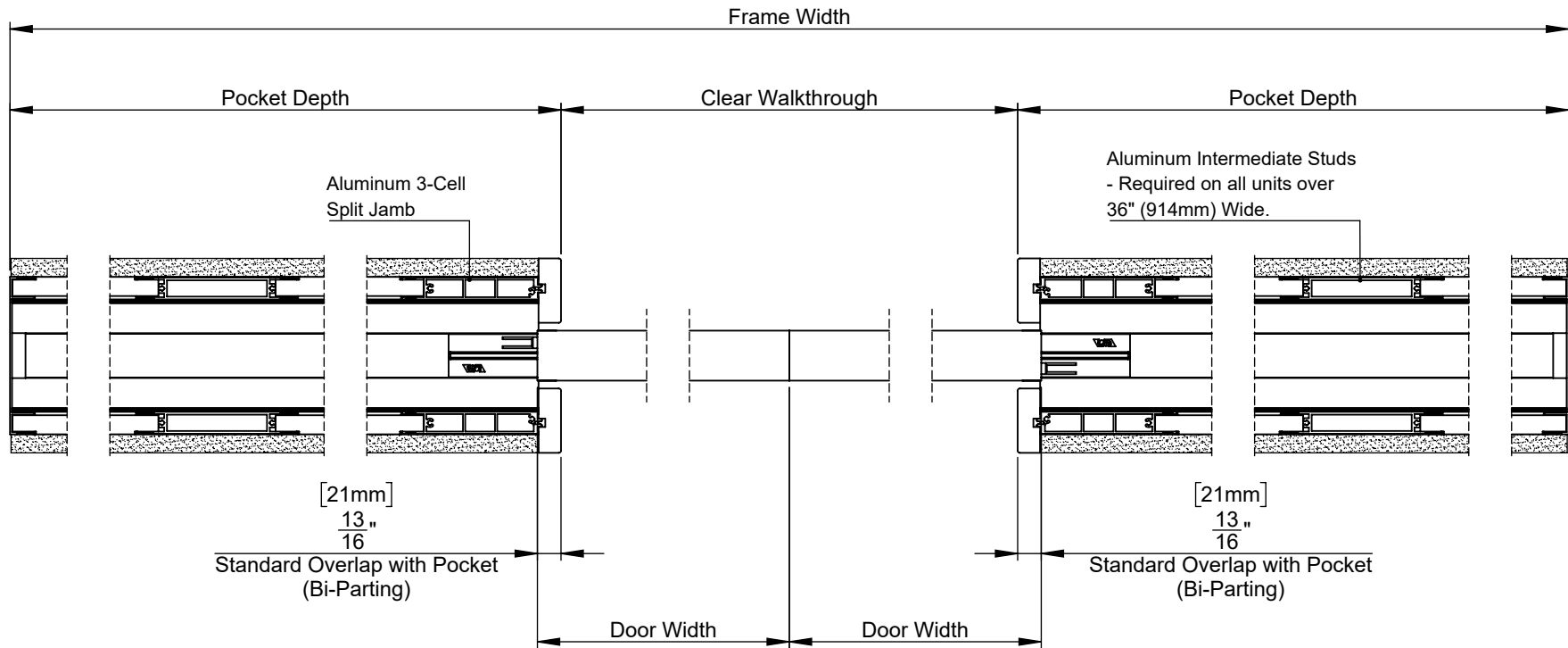
Single Cavity Slider Pocket Frame to Suit:  
5/8" (16mm) Linings (DryWall) & Flat Jamb



Part Number		The information contained in this drawing is the sole property of Cavity Sliders USA Inc. Any reproduction, disclosure or use of this document, without the written permission of Cavity Sliders USA Inc, is strictly prohibited.	
Units Measurements in mm & Inches		 Quality Sliding Door Hardware	
Scale Not to Scale	Sheet 2 of 3		
Date 7/12/2020	Rev. -01	548 Finney Ct, Gardena, CA 90248 Phone +1 (888) 466 0030 Fax +1 (310) 769 5824 <a href="http://www.cavitysliders.com">www.cavitysliders.com</a>	


# CS AutoCav 5 1/2 Residential

Bi-Parting Cavity Slider Pocket Frame to Suit:  
5/8" (16mm) Linings (DryWall) & Flat Jamb



### Residential Autocav Notes (Bi-Parting):

- Minimum door width of 30" (762mm).
- Maximum door weight 130lbs per Door (60Kg).
  - Total System Weight 260lbs (120Kg)
  - For heavier doors please consult our sales team
- Access Panels are Site Built - Not Provided by CS
- Hanging not required for Bi-parting Units

Part Number		The information contained in this drawing is the sole property of Cavity Sliders USA Inc. Any reproduction, disclosure or use of this document, without the written permission of Cavity Sliders USA Inc, is strictly prohibited.	
Units Measurements in mm & Inches		 Quality Sliding Door Hardware 548 Finney Ct, Gardena, CA 90248 Phone +1 (888) 466 0030 Fax +1 (310) 769 5824 www.cavitysliders.com	
Scale Not to Scale	Sheet 3 of 3		
Date 7/12/2020	Rev. -01		