

The following information is required before manufacture of your unit can begin.  
Please check / fill out as many details as possible and email back to us.  
**(ONE DOOR PER FORM)**

T +64 9 276 0800  
F +64 9 276 2525  
sales@csfordoors.co.nz

## 1 Job / Door Details

Job name \_\_\_\_\_

CS Ref: **SA** \_\_\_\_\_

Door location \_\_\_\_\_

Unit type:  Auto  Manual  Hydraulic

Door type:

- CS AluTec 38mm  CS AluTec 75mm  
 Customer supplied (Manual/Hydraulic only)

Door colour: \_\_\_\_\_

Door configuration:  Single  Multiple: \_\_\_\_\_

Door size / trim size (circle one):

\_\_\_\_\_ mm high X \_\_\_\_\_ mm wide

Wall to wall measurement for lintel

(75mm AluTec only): \_\_\_\_\_

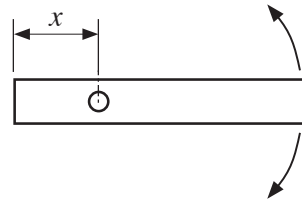
Door weight (Cust. supplied door): \_\_\_\_\_

Seals required (e.g. triple base seal, jamb seal): \_\_\_\_\_

### Pivot Details

Pivot position: (x) \_\_\_\_\_

Door direction: (tick one)  Anti clockwise



Opening angle:  90°  Clockwise

Other: \_\_\_\_\_

Door Type	Minimum Pivot Point:
Auto/Manual 75mm	250mm
Manual 38mm	51mm
Hydraulic 38mm	70mm

## 2 Site Details

Delivery address (if different from quote) \_\_\_\_\_

Site contact \_\_\_\_\_ Phone \_\_\_\_\_

Automation contact \_\_\_\_\_ Phone \_\_\_\_\_

Security contact \_\_\_\_\_ Phone \_\_\_\_\_

Electrical contact \_\_\_\_\_ Phone \_\_\_\_\_

Special delivery instructions \_\_\_\_\_

Access considerations \_\_\_\_\_

## 3 Door Function AutoPivot

Normal position:  Open  Closed

Hold open option required?  Yes  No

LEFT SIDE: Activated by (see options below) \_\_\_\_\_

RIGHT SIDE: Activated by (see options below) \_\_\_\_\_

Close door after \_\_\_\_\_ seconds

Electronic V-Lock required (Auto only)

Lintel Door Stop required (Auto only)

Other requirements: \_\_\_\_\_

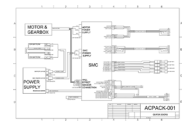
The following information is required before manufacture of your unit can begin. Please check / fill out as many details as possible and email back to us. (ONE DOOR PER FORM)

T +64 9 276 0800  
F +64 9 276 2525  
sales@csfordoors.co.nz

## 4 Activation Devices

CS AutoPivot

**ACPACK001**  
PLC CONTROLLED (STD)



**ACPACK002**  
HANDWAVE SENSOR



**ACPACK003**  
PDL SWITCH



**ACPACK005**  
P/BUTTON ACCESS



**ACPACK006**  
PIEZO BUTTON (2 off)



**CUSTOM FUNCTIONS**

**TALK TO OUR TECHNICAL TEAM**

Security:

Lock from LHS

Lock from RHS

Lock from both sides

## 5 Specifications

CS AutoPivot

### Standard CS AutoPivot Controller Specs

Safety features	Safety beams 2 pair Electronic obstacle detection
Power requirements	230V AC 50Hz single phase (USA 110V AC)
Battery backup	(optional) - 24VDC
Door weight	Up to 400kg (880lb) (total door weight per motor)
Door size	Up to 2300mm high x 3000mm wide*
Drive system	Brushless DC motor
Locking device	Mechanical V lock
Hold open time	0 - 25 Sec (adjustable)
Fire alarm	Dry contact
Input devices	6 x dry contact, 2 x safety beam (can be used as dry contact input)
Output devices	4 x transistor out 2 x solid state relay out
Aux power	12VDC and 24VDC available for powered sensors

Standard settings are default. These can be adjusted on request.

All door functions are available through CS Controller Interface application. Windows based operating system required.

### Standard door functions

Entry input	Push button or handwave
Exit input	Push button, handwave
Mode switch	Auto, Hold Open, Hold Closed
Normal hold open time	3 Sec
Safety beams	2 pairs
Battery backup	Optional
Wiring looms	Included 5000mm (16ft) standard

### Additional door functions available

8 Inputs	Dry contact. Select from: Open Cycle, Open Only, Close Only, Hold Open, Safety Beams, Lock, Partial, Fire, Forwards, Backwards.
6 Outputs	4 transistor. 2 relay. Select from: Door Open, Door Closed, Door Stopped, Door Locked, Door Engaged, Door Vacant, Door Fault, Door on batteries, Fire, Door Forced.
Acceleration/ Deceleration	Adjustable
Positive Close	Constant force applied when closed for seal compression
Hold Position	On or off. Door cannot be moved when stopped
Force Open	On or off. Door will auto open when pushed

## 6 Commissioning

CS AutoPivot

All CS AutoPivot units are tested and pre-commissioned at the factory. We strongly recommend that CS FOR DOORS performs an on-site commissioning of all AutoPivot units following installation. If you decide to use an alternate vendor for commissioning it is your responsibility to ensure they are suitably qualified and familiar with this product. Any works required of CS after commissioning by that vendor, including online or phone support, will be chargeable. CS FOR DOORS also offer a limited 'on-line' commissioning service which can be performed along with your vendor commissioning. For details and a quotation on any commissioning service please contact us.

## 7 Service & Warranty Information

CS AutoPivot

CS AutoPivot units should be serviced approximately every 5000 uses. Door usage guidelines are as follows:

- Low use: Doors are used 10-20 times a day (3500-7000 open cycles per year)
- Moderate use: Doors are used 30-40 times a day (10,000 - 15,000 open cycles per year)
- High use: Doors are used several times an hour or 50-60 times a day (17,500 - 20,000 + open cycles per year)

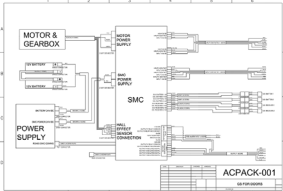



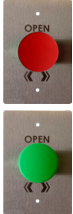

This automated pivot door system comes as standard with a 10 year warranty (12 mths on electrical components). Contact CS FOR DOORS for a copy.

60652/2 07.2019

**CS Cavity Sliders Pty. Ltd.**  
T 02 9905 0588  
F 02 9905 7088  
info@cavitysliders.com.au

All copyright and other property in this document is reserved by Cavity Sliders Limited. Details and specifications are subject to change without notice. Whilst all care is taken to ensure the accuracy of all information, no responsibility will be accepted for any errors or omissions.

**Auckland Head Office**  
T +64 9 276 0800  
F +64 9 276 2525  
sales@csfordoors.co.nz

Activation Pack	Description	Summary
<p><b>ACPAC001</b> PLC CONTROLLED</p> 	<p><u>Pack includes:</u></p> <ul style="list-style-type: none"> <li>- Clean contacts for customer supplied activation</li> <li>- 8 Inputs customisable with momentary &amp; latching</li> <li>- Open/close/hold/lock/emergency open/safety &amp; more</li> <li>- 6 Outputs customisable including door state &amp; more</li> <li>- Pre wire of above components</li> </ul>	<p>For use with existing security or automation systems. Supply your own activation devices such as prox card.</p>
<p><b>ACPAC002</b> HANDWAVE SENSOR</p> 	<p><u>Pack includes:</u></p> <ul style="list-style-type: none"> <li>- Handwave sensors x 2</li> <li>- Wave to open S/S plate x 2</li> <li>- 3 Position key switch + S/Steel plate</li> <li>- Locking or non lock functionality</li> <li>- Pre wire of above components</li> </ul>	<p>Clever technology that allows non contact activation, excellent for use in kitchens, laundries and healthcare where your hands are often full and hygiene is a priority</p>
<p><b>ACPAC003</b> PDL SWITCH</p> 	<p><u>Pack includes:</u></p> <ul style="list-style-type: none"> <li>- PDL switch kit x 2</li> <li>- Spring return switch x 2</li> <li>- Pre wire of above components</li> </ul>	<p>Classic light switch style activation allows for discreet placement that can match the style of existing switches elsewhere in your building</p>
<p><b>ACPAC005</b> P/BUTTON ACCESS</p> 	<p><u>Pack includes:</u></p> <ul style="list-style-type: none"> <li>- Heavy duty push buttons x 2 (choose black, red or green)</li> <li>- Push to open s/steel plate x 2</li> <li>- 3 position key switch + s/steel plate x 1</li> <li>- Locking or non locking functionality</li> <li>- Pre wire of above components</li> </ul>	<p>Heavy duty push buttons are perfect for use in areas that see a lot of pedestrian traffic, sturdy design keeps your activation safe in a public setting</p> 
<p><b>ACPAC006</b> PIEZO BUTTON (2 off)</p> 	<p><u>Pack includes:</u></p> <ul style="list-style-type: none"> <li>- Illuminated piezo (red/green) x 2</li> <li>- PDL mounting plate x 2</li> <li>- 5m plug and play cable x 2</li> <li>- Pre wire of above components</li> </ul>	<p>22mm Piezo touch sensitive buttons with chrome surround and customisable bi-colour LED indicator ring, perfect for a wide range of stylish applications.</p>