

CL100 Lever

The **CaviLock® CL100 Lever** is the most common commercial side handle fitted to the **CL100 Mortise Lock**. It is robust and strong and has a commercial look that matches other commercial handles and locks in most applications. The vertical lever grip enables a positive pull action on even the heaviest doors.



CaviLock CL100 Lever with Key on aluminum door.

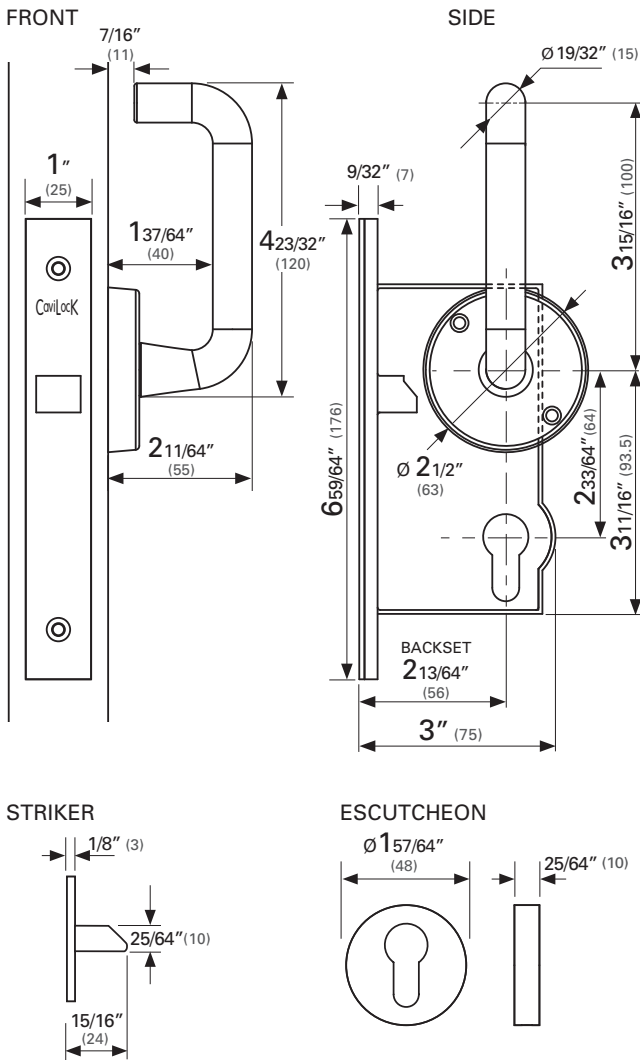


CaviLock CL100 Lever with Key on timber door.

 **CaviLock®**
Quality Sliding Door Hardware

CL100 Lever

Dimensions



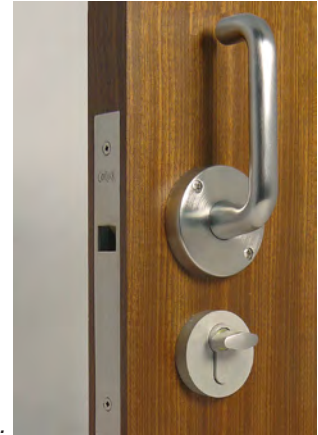
Key Locking

Key locking may be added to the CL100 Mortise Lock with the addition of a Euro Profile cylinder with American Schlage C Keyway, specified as either KA (Keyed Alike) or KD (Keyed to Differ).

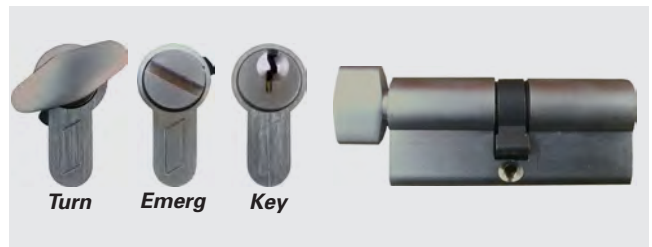
Options include:

- ▮ Turn/Emergency
- ▮ Turn/Key
- ▮ Key/Key
- ▮ Key One Side

Please note that this specification is suitable for 1-3/4" thick doors and must be done at time of order.



CL100 Lever (Key/Turn option).



Construction

Case:	Die cast Zinc
Internal Parts:	Bronze/Brass
Screws, springs etc:	Stainless Steel
Faceplate & striker:	Brushed Stainless Steel

Finish Options & Configurations

Available in Satin Chrome. Cylinders are not handed.

CL100A7002	Lever - Key/Key	
CL100A7010	Lever - Key/Turn	
CL100A7004	Lever - Key One Side	
CL100A7014	Lever - Turn/Emerg	
CL100B5002	Lever Only	

CL100 Mortise Lock Features

The **CL100 Mortise Lock** is a versatile mortise that has many different internal and external hardware options.



- ▮ Suitable for pocket doors and surface sliding doors
- ▮ Easy to operate
- ▮ Corrosion resistant
- ▮ For use with timber or aluminum doors

Drawings & pictures are not to scale. All dimensions in inches (and mm).

www.cavitysliders.com

High quality products designed in New Zealand



T (888) 466 0030
F (310) 769 5824
E info@cavitysliders.com

Cavity Sliders USA Inc.

548 Finney Ct
Gardena
CA 90248



Another quality product from:

CavitySliders
Quality Sliding Door Hardware