

# TopMountTrack - Double/Triple

**CS TrackSystems** are an innovative range of track systems designed for a multitude of sliding doorway applications.

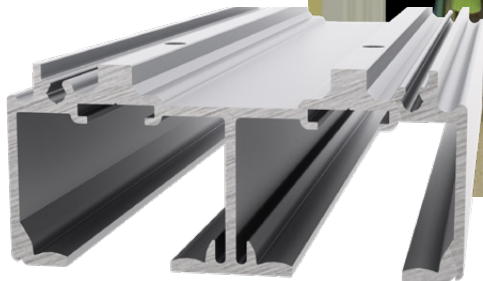
**CS TopMount Track** is a smooth running low profile track system suitable for incorporating into pocket door frame and bypass wardrobe assemblies.

The addition of the TopMount Track and CS carriage system allows you to transform a standard pocket into a luxury item. This system is ideal for use in applications where longevity of use and smooth operation are required.

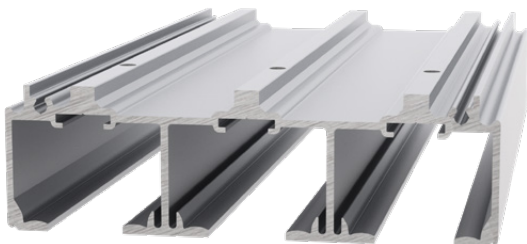
TopMount Track is available as standard in a double or triple track configuration.



*Double TopMount Track wardrobe door system.*



*Double TopMount Track (1-3/8" door option)*

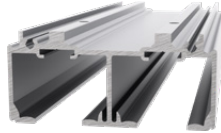
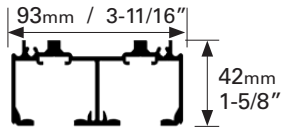


*Triple TopMount Track (1-3/8" door option)*

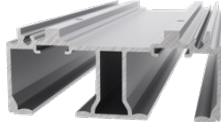
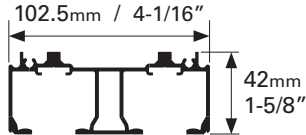
# CS TopMountTrack - Double/Triple Track

## Technical Information

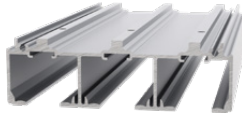
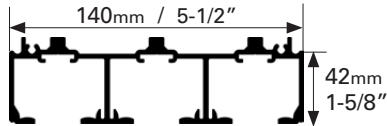
### Double Track - 1-3/8" doors



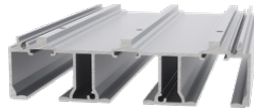
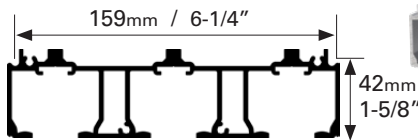
### 1-3/4" doors



### Triple Track - 1-3/8" doors



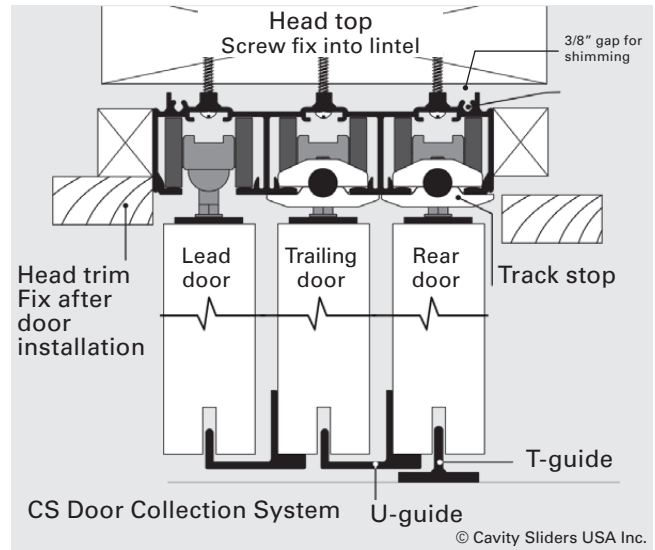
### 1-3/4" doors



Track	Double	Triple
<b>Finish:</b>	Mill-finish	Mill-finish
<b>Recommended Door Thickness:</b>	35 or 45mm (1-3/8" or 1-3/4")	35 or 45mm (1-3/8" or 1-3/4")*
<b>Max Weight/door:</b>	240kg (500lb)	240kg (500lb)
<b>Carriage Pack:</b>	M6 or M8	M6 or M8

\*For thicker doors, please contact us for suitable options

## Suggested Fixing Detail



## Door Collection System

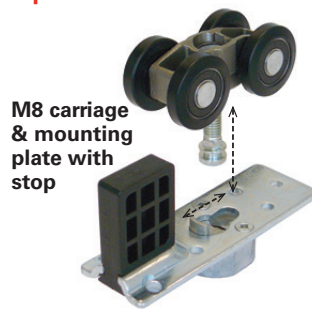
Where multiple doors are required to slide in conjunction with one another, the **CS Door Collection System** ensures a smooth running telescopic system (*see separate brochure*). The doors are connected so that there is no need for floor tracks or guides through the opening.

## How to Order

1. **Choose track configuration**(double or triple)
2. **Specify door thickness**
3. **Specify track length**  
(available in 6, 8, 12 and 24' pre-cut lengths)
4. **Choose a carriage pack** (one per door)  
- refer to **Carriage Packs page**
  - a) **M6** (200lb)
  - b) **M8** (500lb)  
(includes carriages, mounting plates, T-Guide, fixing screws, adjusting wrench and installation instructions)
  - c) **CS Door Collection System**  
(includes **M6** or **M8** carriage pack plus door collection system for **2 door** or **3 door** setup)

## Design Features & Options

- ▶ Tracks can be used for bypass and collection systems.
- ▶ Tracks can be configured to suit Bi-Parting door set-ups, including CornerMeeting detail.
- ▶ Available in 6', 8', 12' and 24' pre-cut lengths. Custom lengths can be cut to order.
- ▶ Heavy duty one-piece extruded aluminum track.
- ▶ Pre-machined mounting holes.



- ▶ CarriSnap™ quick release system allows the door to be removed easily from track; no need to unscrew anything and lose door height adjustment.

[www.cavitysliders.com](http://www.cavitysliders.com)

High quality products designed in New Zealand



T (888) 466 0030  
F (310) 769 5824  
E [info@cavitysliders.com](mailto:info@cavitysliders.com)

**Cavity Sliders USA Inc.**

548 Finney Ct  
Gardena  
CA 90248



**CavitySliders**  
The Pocket Door Experts